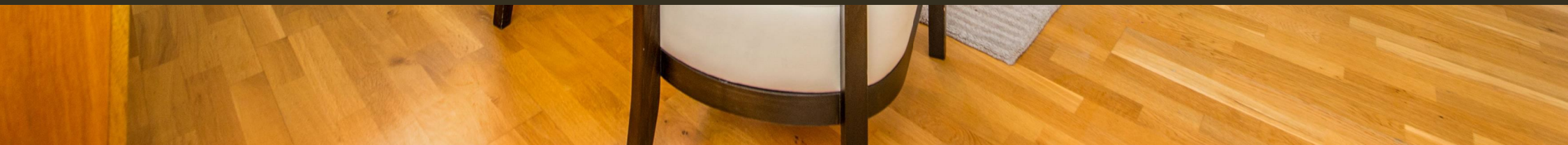




47 Marsham Street, Westminster
London SW1P

GARTONJONES.COM



47 Marsham Street, Westminster
London, SW1P

GARTON JONES.COM

49 Marsham Street Lettings:
London +44 (0) 20 7340 0480
SW1P 3DP westminster@gartonjones.com
www.gartonjones.com

£795 Per Week

A well presented 2 bedroom apartment available to rent located in this popular development in the heart of Westminster. The internal living space comprises of an open plan reception room, an integrated kitchen, 2 bedrooms both with fitted wardrobes and the master benefitting from an en-suite and further guest bathroom. As a resident of Romney House you will also have the use of a 24 hour concierge and a well-equipped gymnasium. The development is extremely convenient for access to many of the renowned local landmarks which include the Houses of Parliament, Westminster Abbey, Tate Britain Gallery and the River Thames. The local transport links of Victoria Station is nearby providing mainline UK services including the Gatwick Express as well as the underground services of Victoria, Pimlico, St James Park and Westminster. The area has an abundance of amenities and restaurants such as The Cinnamon Club, Osteria Dell'angolo and many more. Just a short walk away is the Chelsea College of Arts and St Johns Smith Square Concert Halls offering a variety of classical musical performances. Garton Jones are based on site and manage this apartment.

**Please note that the furniture may differ to that shown in the current photos

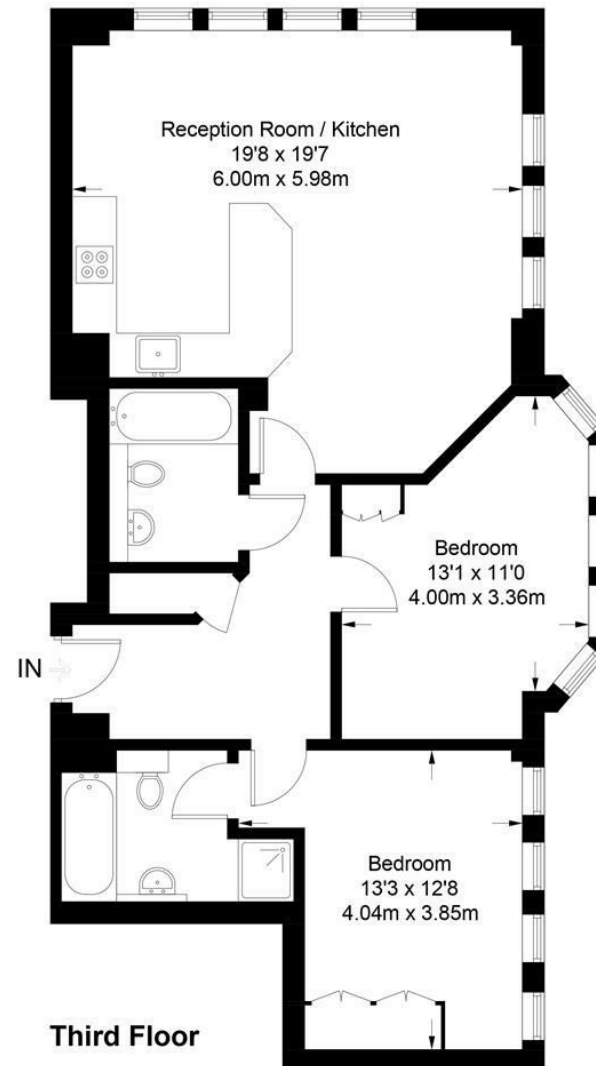
Deposit 5 Weeks
Minimum Term 12 Months
Council Tax Band F (London Borough of Westminster)
EPC Rating: C (78)

- 2 Bedroom Apartment
- 3rd Floor (Lift)
- Open Plan Reception Room
- Smart Integrated Kitchen
- 2 Bathrooms (En-Suite)
- Furnished
- Available: 28th August 2025
- 24 Hour Concierge and Residents Gymnasium
- Close to Local Amenities
- Walking Distance to St James's Park, Westminster & Victoria Rail/Tube Links



Romney House

Approximate Gross Internal Area = 860 sq ft / 79.9 sq m



Not to scale, for guidance only and must not be relied upon as a statement of fact.
All measurements and areas are approximate only and have been prepared in
accordance with the current edition of the RICS Code of Measuring Practice.

